

MONTHLY MEMBERSHIP PROGRESS REPORT

District 3234H1

Results as of: 6/30/2020

GMT:

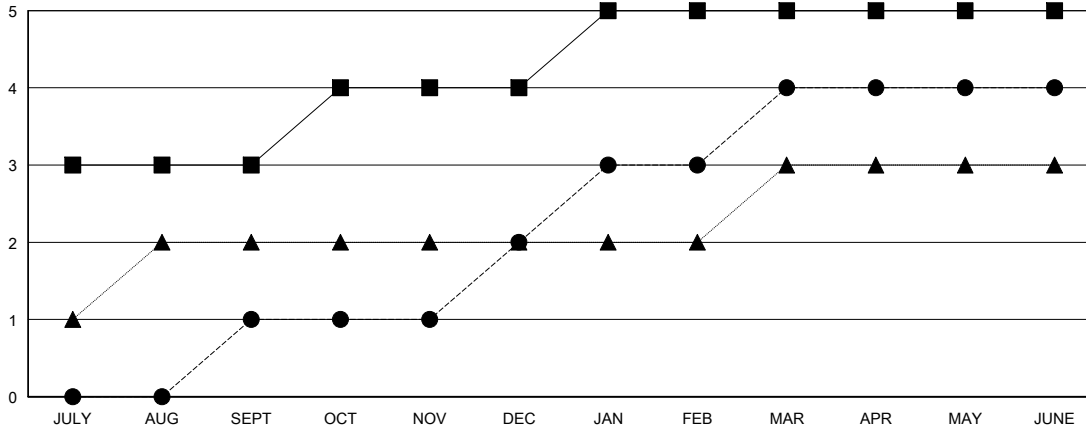
LOCATION INDIA

GMT CA

Clubs			
RESULTS FOR 2019-2020			
QUARTER	NEW CLUB GOAL	NEW CLUBS	DROPPED CLUBS
JULY/AUG/SEPT	3	1	0
OCT/NOV/DEC	1	1	6
JAN/FEB/MAR	1	2	2
APR/MAY/JUNE	0	0	0

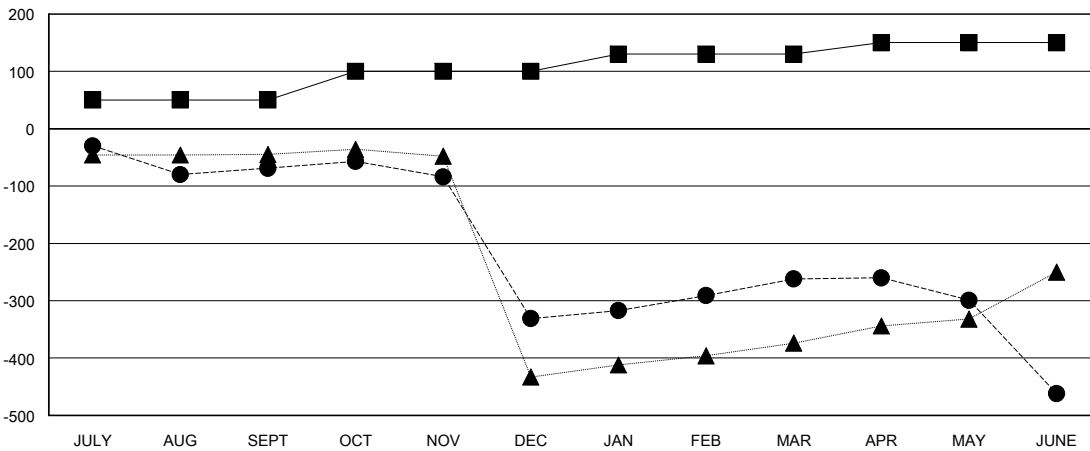
Members			
RESULTS FOR 2019-2020			
QUARTER	MEMBER GROWTH NET GOAL	MEMBER GROWTH ACTUAL	DROPPED MEMBERS ACTUAL (including transfers)
JULY/AUG/SEPT	50	79	135
OCT/NOV/DEC	50	68	330
JAN/FEB/MAR	30	237	147
APR/MAY/JUNE	20	87	280

GOALS AND ACTUAL NEW CLUBS CUMULATIVE



- - CURRENT YEAR GOALS FOR NEW CLUBS
- - CURRENT YEAR ACTUAL NEW CLUBS
- ▲ - LAST YEAR ACTUAL NEW CLUBS

GOALS AND ACTUAL MEMBERS CUMULATIVE



- - MEMBER GROWTH NET GOAL
- - MEMBER GROWTH ACTUAL
- ▲ - LAST YEAR MEMBERSHIP ACTUAL

DROPPED CLUBS: 8	58 CLUBS OF 97 ADDED 1 OR MORE NEW MEMBERS	GENDER DISTRIBUTION
		MALE 1,896 (65.42%)
		FEMALE 1,002 (34.58%)
DROPPED MEMBERS	CLICK HERE FOR CUMULATIVE MEMBERSHIP DATA	TOTAL FAMILY UNIT MEMBERS 1,772
DECEASED 7		FAMILY MEMBERS PAYING HALF DUES 926
CLUB CANCELLED 214		
OTHER 671		
TOTAL 892		